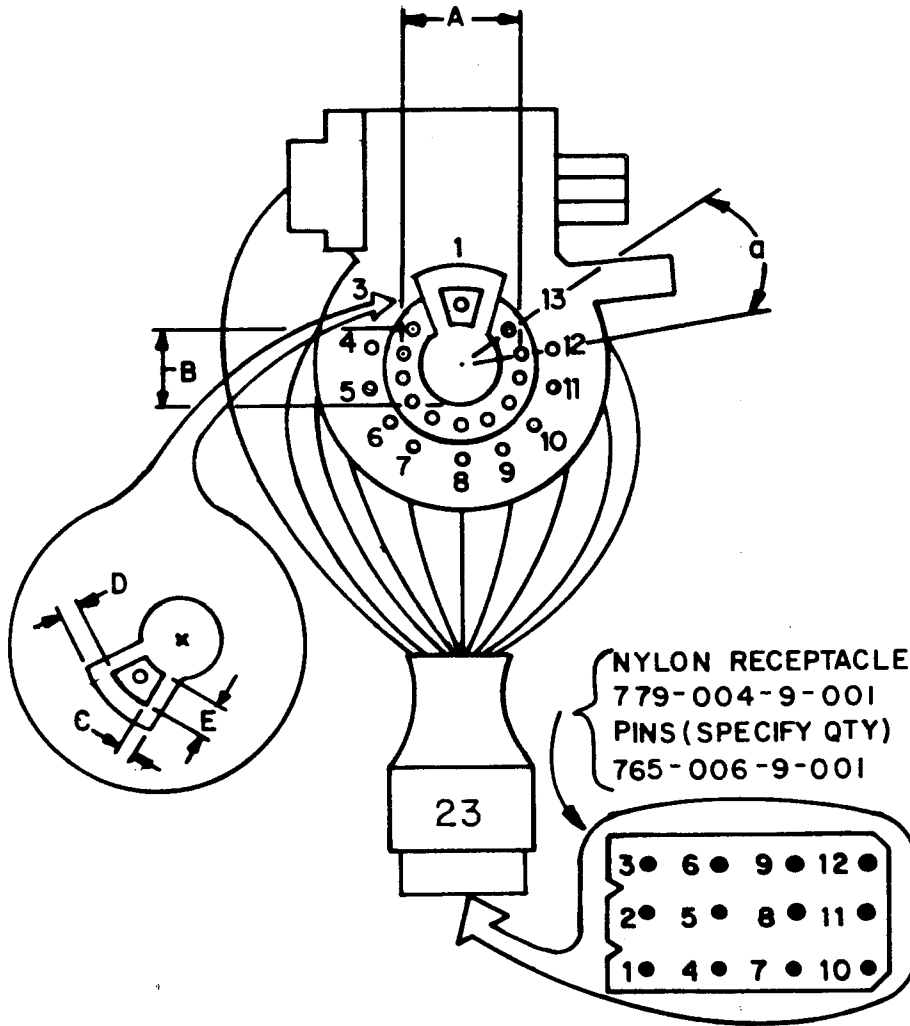


# CRT ADAPTER



# MODEL CR-23

ASSEMBLY WITH WIRES — 527-087-9-001



**NOTE:** NO CONTACTS AT PIN POSITIONS 3 AND 13.

WIRING SCHEME

CRT SOCKET PIN	WIRE COLOR	NYLON RECEPTACLE
1	BLK	12
2	keyway	—
3	—	—
4	YEL/BLU	N.C.
5	YEL/GRN	4
6	GRN	7
7	YEL/RED	10
8	RED	6
9	WHT	1
10	BRN	2
11	BLUE	8
12	WHT/RED	N.C.
13	—	—
14	keyway	—

**FITS CRT DIMENSIONS:**

- A = pin circle diameter = 15.24 mm/0.600" nom.
- a = angular pin spacing = 25-5/7°
- B = post diameter = 11.0 mm/0.433" max.
- C = keyway width = 1.52 mm/0.060" nom.
- D = keyway width = 1.27 mm/0.050" nom.
- E = keyway depth = 5.59 mm/0.220" min.



**BK PRECISION**

B & K-Precision, Factory Service Department  
 Maxtec International Corporation  
 6470 West Cortland Street  
 Chicago, Illinois 60635  
 Telephone: (312) 889-1448

Used with B &amp; K-Precision Models: 467, 470

TUBE TYPE	HEATER VOLTAGE	TUBE TYPE	HEATER VOLTAGE	TUBE TYPE	HEATER VOLTAGE
13VBLP22	6.3	510ABMB22	6.3	A48JEX03X	6.3
15VATP22	6.3	510ABYB22	6.3	A51ACG20X	6.3
19VJFP22	6.3	510SLB22	6.3	A51JFC60X	6.3
19VKDP22	6.3	560DVB22	6.3	A51-230X	6.3
19VLDP22	6.3	560EGB22	6.3	A51-427X	6.3
25VGXP22	6.3	560GDB22	6.3	A53JBM95X	6.3
25VGYP22	6.3	670BTB22	6.3	A53JDE60X	6.3
25VHDP22	6.3	670CAB22	6.3	A63AAM02X	6.3
320CXB22	6.3	670CDB22	6.3	A63JEZ00X	6.3
320DCB22	6.3	A33AAB20X	6.3	E2862	6.3
320DKB22	6.3	A33AAB35X	6.3	E2940	6.3
370GCB22	6.3	A33ABL20X	6.3	M29JAA00X	6.3
370GKB22	6.3	A34JCS05X	6.3	M29JHN00X	6.3
370HEB22	6.3	A34JER00X01	6.3	M34EM00X	6.3
420GFB22	6.3	A38ABL30X	6.3	M34JGS11X	6.3
420GMB22	6.3	A38JDB36X	6.3	M46JGK00X	6.3
420GTB22	6.3	A42-590X	6.3	M48JBR00X	6.3
470MSB22	6.3	A43AAZ00X	6.3	M48JFK59X	6.3
470MTB22	6.3	A43JFF00X	6.3	M51JGK00X	6.3
		A48AAB20X	6.3		

In order to keep your set-up chart up-to-date, it is recommended that you subscribe to the B & K-Precision chart mailing service. These mailings will occur in May and November of each year and will include all the tubes presently listed on your chart plus all new types of CRT's that have come out since the last mailing.

If you wish to take advantage of this service, contact:

**B & K-PRECISION**, Factory Service Department  
 Maxtec International Corporation  
 6470 West Cortland Street  
 Chicago, Illinois 60635  
 Telephone #: (312) 889-1448

For information on ordering a subscription.



